

Lincoln Self Reliance Review April 2022

**“As This Chapter Of Your Life Ends,
May A New And Exceptional One
Begin”**



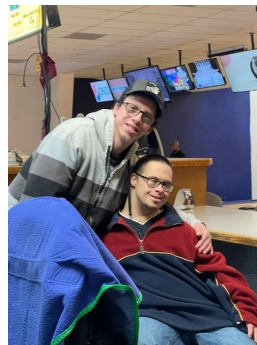
Elaina Wade started with Lincoln Self Reliance in the Administration Assistant department July of 2010. She very quickly was an asset to LSR as a company. Often referred to as the Brain of the organization, she took on far more responsibilities than ever expected by creating spreadsheets, and reporting tools among many other things to help streamline and simplify the Admin. Assistants duties. Elaina has been a phenomenal teacher throughout her years with us and has helped by providing her vast knowledge of Microsoft Excel to several of her co-workers. She is a human spell checker, and has an eye for details far greater than the typical person!

Elaina will be hugely missed by all her co-workers, not only for the great skills she brought to all of us but too for her kind heart and warm smile, she is a woman who truly cares about those around her! She has made an everlasting impact to all participants served within LSR, the individuals in the Afton location love making her craft projects, she hangs each and every one of them up for display, always being sure that none out shine or shadow one of the ones before it!

All of us here at LSR would like to extend our best wishes to Elaina as she enters into a new adventure and retirement!

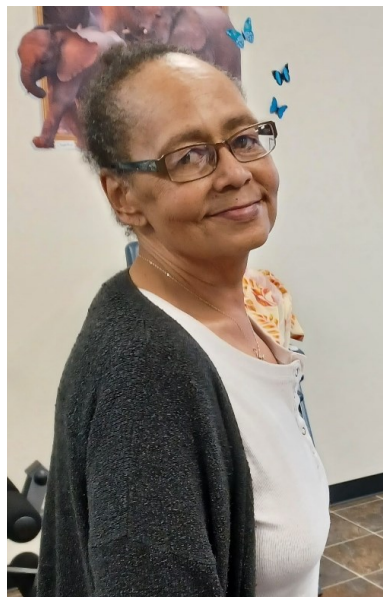
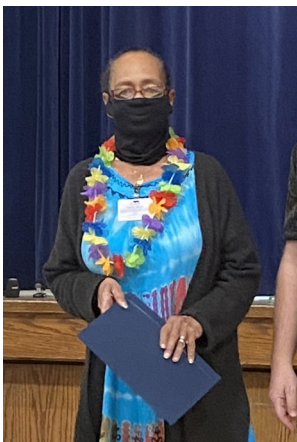
EVANSTON

We have been having a lot of fun these last few months; here in day services we made huge foam airplanes, as long as the wind wasn't blowing they flew really well. We also made different kinds of slime: fluffy slim, sticky slim, rainbow slim and glow in the dark slim; fluffy slime was the participants favorite, instead of contact solution you use shaving cream staff really enjoyed watching and helping the clients experiment with the different textures. It's been great to get out in the local community more often, we are doing this by going bowling one time a month, going to the rec-center once a week with a variety of activities participants can do while there we keep really busy, they are really enjoying the basketball courts. Being so close to Utah we are provided with many different museums and plan to see a bunch of them this year, in February we explored the Air Force Base Museum.



Janice Speth

This quarter I would like to highlight one of the Thayne staff for an outstanding job over this last year. She is always so willing to fill in whenever I ask. She is so detail oriented and makes sure everything gets complete on her shift. She is beloved by all her co-workers and the persons served. Janice has worked for LSR for three years and has come a long way in learning her job expectations. She is the first to come to work early or stay late if needed. She is always in such a positive mood and willing to help out anywhere she is asked to. Janice enjoys making others happy and it shows, not only the way she treats the persons served but also how she treats her co-workers. When asked what the best part of her job was she said "I love all that I can do for LSR, it is the best place to be". A few of her favorite things are: her kids, grandkids, true drama TV shows, cooking TV, word games, art and sewing. She loves her dogs and would do anything for them. We are excited to highlight Janice this quarter and are looking forward to having her here at LSR for many years to come. Thank You Janice for all you do for LSR and the people we serve.



Autism, or autism spectrum disorder (ASD), refers to a broad range of conditions characterized by challenges with social skills, repetitive behaviors, speech and nonverbal communication. According to the Centers for Disease Control, autism affects an estimated 1 in 44 children in the United States today.

We know that there is not one autism but many subtypes, most influenced by a combination of genetic and environmental factors. Because autism is a spectrum disorder, each person with autism has a distinct set of strengths and challenges. The ways in which people with autism learn, think and problem-solve can range from highly skilled to severely challenged. Some people with ASD may require significant support in their daily lives, while others may need less support and, in some cases, live entirely independently.

Several factors may influence the development of autism, and it is often accompanied by sensory sensitivities and medical issues such as gastrointestinal (GI) disorders, seizures or sleep disorders, as well as mental health challenges such as anxiety, depression and attention issues.

Signs of autism usually appear by age 2 or 3. Some associated development delays can appear even earlier, and often, it can be diagnosed as early as 18 months. Research shows that early intervention leads to positive outcomes later in life for people with autism.

<https://www.autismspeaks.org/what-autism>

Inspiring Donations

Do you shop at a Kroger family store? If you do...you could be helping LSR earn rewards, by simply linking your shopper's card with LSR, at no cost to you. Simply use the link below and create an account:

<https://www.smithsfoodanddrug.com/i/community/smiths-inspiring-donations>

After creating the account make sure to add an Alt ID. Then on the left hand side of the screen you'll see a tab called "Inspiring Donations". Click on that. You can search for the organization ([Lincoln Self Reliance](#)) or [type in the organization # 72628 or EB340](#). Select LSR, it should then show that you have successfully enrolled!

It's that easy!!

Any transactions moving forward using your shopper's card or Alt ID entered at the checkout will be applied to the program. Smith's Inspiring Donations will donate 0.5% of all eligible spending to LSR.

If you have any questions or need help completing these steps. Let me know and I would be happy to help.

Written By: Stacie, Evanston Admin

Looking For Other Ways To Help?

Amazon: <https://smile.amazon.com/ch83-0331735>
Volunteer your time and/or talents
Watch our Facebook page for fundraising events

Afton Thrift Store It Takes A Village

Our store is managed by Brandi and ran with her small team of dedicated employees, we have a couple clients who love to work in the thrift store as well as, a local community member who volunteers her time to help organize the bookroom, and many LDS missionaries supported by Sister Connie Lancaster who volunteer their time weekly. The profits from the thrift store go directly into helping the LSR participants enjoy activities at a more affordable cost.

Thank you to all community members who donate and shop with us, without all of you we wouldn't be able to maintain a successful local thrift store.

We accept a large variety of items if you have any questions please call 307-885-1577 ext. 218 or stop in to 1038 South Washington St, Afton, 83110

Please only drop donations off during business hours

Monday-Friday

10:00am-5:00pm

Saturdays

10:00am-2:00pm



Lincoln Self Reliance would like to send out a HUGE THANK YOU to Silver Star Communications for the recent grant of \$2000

January February March Employee Service Anniversaries

ONE YEAR

Cynthia Sharpe (Diamondville, DSP)
Kylie Taylor (Diamondville, DSP)
Dustin Smith (Evanston, DSP)

TWO YEARS

Kamie Bennion (Thrift-Store)

THREE YEARS

Kyle Foulger (Evanston, LDSP)
Paige Mccliff (Evanston, Supervisor)

FOUR YEARS

Cynthia Genini (Afton, DSP)

SEVEN YEARS

Macii Bahls (Diamondville, DSP)

**“Tough Times Don’t Last, But Tough
Teams Do”**

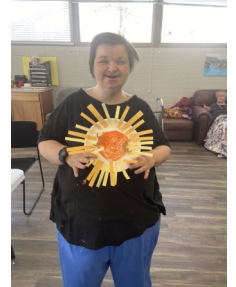


Afton and Thayne enjoyed a day at the
Pinedale Aquatic Center



Afton

Here in the Afton location we have had an amazing start to the New Year. We have been going bowling weekly as well as a new found favorite of visiting our local library for many fun activities such as: love potion making, learning about rainbows, using a magic cube to see images and the functioning of the human brain and heart, not to mention they brought a virtual safari into the library making it possible for clients to get their pictures with elephants, giraffes, rhinos, and a cheetah. We had a Margi-Gras party complete with music dancing and fun feathered masks. Afton was also able to take a trip to Jackson where we saw moose, elk, and mountain sheep. The participants and staff are greatly looking forward to warmer months which will bring on horse lessons with Jackson Hole Therapeutic Riding as well as yard games and BBQs!



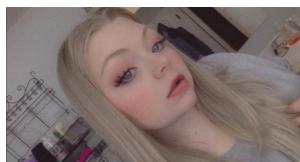
Mission Statement

It is our mission to provide training and support to individuals with disabilities so they may achieve maximum potential for self-reliance and achieve participation in the community.

Sticking With Me

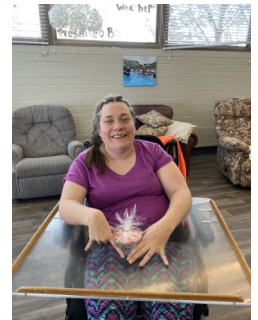
It is with great pride and appreciation that I have the position of Afton Program Manager. Though the past year has been trying, the months have been hard, and the weeks very long I couldn't be more thankful to the team I have with me. Kayla Grisamer, Tina Myles, Cynthia Genini, Jane Scott, Autumn Nalley, you five are the dedicated individuals who have been by my side throughout it all, the staff who show up, who work with their hearts, who love what they do and mainly who they do it for! You are the five employees who I have been able to laugh with, cry with, and rely on. It is because of you that I am where I am and that our clients are thriving in their daily lives! I am the first to say you can teach policies and procedures all day every day the thing you can't teach is compassion and I have been lucky enough to find a skill not easily found five times over in each of you! Although words will never be enough to show you how much I appreciate you I just wanted to say thank you and encourage each person reading this to thank you as well. DSPs are not easy to come by nor easy to keep yet here you all are sticking with me in some of our hardest months!

“Together We Have Achieved So Much”



Logann

This quarter I would like to introduce you to a young woman who is a friend to all. Logann resides in our Afton home and is the kindest soul, she is the first to notice when someone isn't having the best day and is quick to provide them with a warm hug and smile. Logann is 100% girl, she loves the color pink and having her hair and nails done. When she was asked, “If you could have unlimited money to go on a shopping spree what would you buy?” Logann was quick to reply, “MAKE-UP!” Logann has a large family whom are her life, she loves them beyond measure, caring deeply for each and every one of them. She loves to go to the movies and out to eat with her parents, as well as go to her nieces and nephew's events. If you get a chance to meet Logann, sit and spend some time with her I guarantee you will leave the conversation with a warmer heart and you too will now have a new forever friend!



“The Only Way To Have A Friend Is To Be One”

LSR

Lincoln Self Reliance, Inc.

P.O. Box 1449

1038 S. Washington

Afton, WY 83110

www.lsrservices.org



Community Partner



Board of Directors

Kimberly Zuniga, President

Harold Jones, Vice President

Bradley Bond, Secretary/Treasurer

Lisa Beachell, Member

Darren Bateman, Member

Judith Sanchez, Member

LSR

Thrift Store

Monday-Friday

10:00am-5:00pm

Saturdays

10:00am-2:00pm



AFTON

P.O. Box 1449

1038 S. Washington

Afton, WY 83110

Phone: 307-885-1577

Fax: 307-885-2577

THAYNE

250 Van Noy Parkway

Thayne, WY 83127

Phone: 307-883-2577

Fax: 307-883-5578

DIAMONDVILLE

P.O. Box 367

20 Adaville

Diamondville, WY 83116

Phone: 307-877-1321

Fax: 307-877-5774

EVANSTON

100 Bear River Drive

Evanston, WY 82930

Phone: 307-789-2037

Fax: 307-789-0407